



# OPERATION Ripple Effect™

## SIMPLE STEPS: BIG BENEFITS FOR THE MOHAWK RIVER

### PROJECT BULLETIN

Normally, our sanitary sewer system has enough capacity to operate properly. But, when we get heavy rains or sudden snow melts, stormwater overwhelms the system and causes overflows into the Mohawk River. That stormwater runoff enters the sanitary sewer system from multiple sources, including deteriorated and damaged public sanitary sewers and private property connections, such as roof leaders and sump pumps.

Operation Ripple Effect is a program of the Oneida County Sewer District that asks residents, businesses, and municipalities to do their part to reduce overflows. Together, we can help keep the Mohawk River clean.

## SIMPLE STEPS: 48<sup>TH</sup> EARTH DAY CELEBRATIONS

In recognition of the 48th annual Earth Day celebration on April 22, the Oneida County Sewer District's (OCSD) Operation Ripple Effect™ was represented at a number of community events. Earth Day is dedicated to showing support for environmental protection, including opportunities for reuse and making "green" choices to help keep the environment healthy.



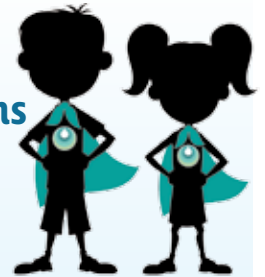
Over 200 attendees visited the Annual Oneida-Herkimer Solid Waste Authority Earth Day Event on Saturday, April 21 from 10 a.m. to 2 p.m., at the Oneida-Herkimer Recycling Center, 80 Leland Avenue Ext. in Utica.

More than 300 MetLife employees learned about Operation Ripple Effect™ at the company's Earth Day event on Wednesday, April 18 from 11:30 a.m. to 1:30 p.m. in Oriskany.



Operation Ripple Effect™ was featured at the One World Flower Festival in Oneida Square on Saturday, May 12. More than 450 people attended.

## MAKING PROGRESS: Free Mohawk River Champion Presentations for Youth Summer Programs



OCSD representatives are now offering free educational presentations for recreation programs within the district during the months of June, July and August. This program, part of Operation Ripple Effect™, is geared toward students in third through seventh grades. Operation Ripple Effect is an Oneida County initiative aimed at helping to eliminate sanitary sewer overflows into the Mohawk River.

**Into the Garden, Out of the Sewer** is a program designed to show youths how anyone of any age can be a part of the solution. OCSD school program representatives engage in an interactive presentation that details what the problem is, why the problem exists, and how they can become **Mohawk River Champions!** The presentation concludes with a fun activity and takes about 45 minutes to complete.



For more information or to schedule,  
contact Shannon Rounds at (315) 733-2313  
or [srounds@paigroup.com](mailto:srounds@paigroup.com)



Contact [cmanion@paigroup.com](mailto:cmanion@paigroup.com) to schedule a briefing.  
For more news and reports, visit [www.RippleEffectOCSD.org](http://www.RippleEffectOCSD.org).  
An Initiative of the Oneida County Sewer District

Anthony J. Picente Jr., *County Executive*  
Steven P. Devan, P.E., *Commissioner*  
Department of Water Pollution and Water Quality Control