



# OPERATION Ripple Effect™

## SIMPLE STEPS: BIG BENEFITS FOR THE MOHAWK RIVER

### PROJECT BULLETIN

Normally, our sanitary sewer system has enough capacity to operate properly. But, when we get heavy rains or sudden snow melts, stormwater overwhelms the system and causes overflows into the Mohawk River. That stormwater runoff enters the sanitary sewer system from multiple sources: deteriorated and damaged public sanitary sewers; and private property connections, such as roof leaders and sump pumps.

Operation Ripple Effect is a program of the Oneida County Sewer District that asks residents, businesses, and municipalities to do their part to reduce overflows. Together, we can help keep the Mohawk River clean.

## MAKING PROGRESS: MORE THAN HALF OF RESIDENTS AWARE OF CAUSES OF SEWAGE OVERFLOWS

A survey conducted earlier this year has shown that more than half of residents within the Oneida County Sewer District's Sauquoit Creek Pump Station Basin are aware that illegal connections to the sanitary sewer system contribute to sewage overflows into the Mohawk River.

These results come 18 months into the launch of the residential outreach program. Additional survey results include:

- ◆ **56%** of residents know that sump pumps and downspouts contribute to sewage overflows into the Mohawk River;
- ◆ **54%** of residents were familiar or somewhat familiar with rain barrel and rain garden solutions to help reduce sanitary sewer overflows;
- ◆ **63%** of residents were familiar or somewhat familiar with the fact that cooking fats and oils contribute to sewer blockages and backups, while **20%** were not familiar at all with this fact;
- ◆ Among all respondents, **57%** were familiar or somewhat familiar with the fact that flushable wipes can cause clogs, resulting in significant time and financial burdens on the system.

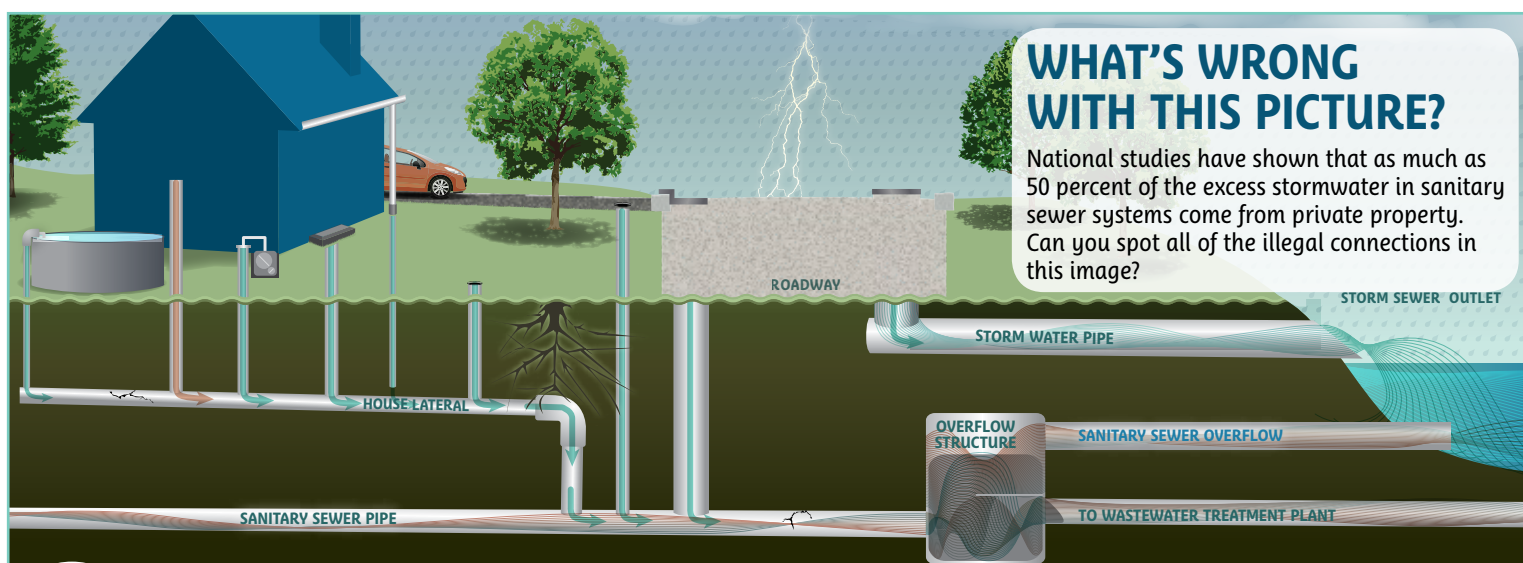
For a full report of survey results, or more information about how individual actions can add up to widespread improvements to the sanitary sewer system, visit [RippleEffectOCSD.org](http://RippleEffectOCSD.org).



### OVERALL AWARENESS

33%  
Not Familiar

67%  
Familiar



Contact [cmanion@paigegroup.com](mailto:cmanion@paigegroup.com) to schedule a briefing.  
For more news and reports, visit [www.sewerrehabocsd.org](http://www.sewerrehabocsd.org).  
An Initiative of the Oneida County Sewer District

Anthony J. Picente Jr., County Executive

Steven P. Devan, P.E., Commissioner  
Department of Water Pollution and Water Quality Control