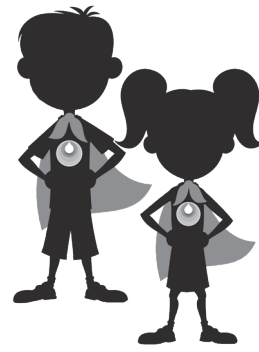


BECOME A MOHAWK RIVER CHAMPION!



Activity Break 1

WORD BANK: **stormwater, sanitary sewer system, Mohawk River, cracks, Operation Ripple Effect**

1. The _____ is a series of pipes used for transporting wastewater to treatment facilities for cleaning.
2. In the event of too much rain or snowmelt, _____ can enter the Oneida County Sanitary Sewer System.
3. Too much excess water can overwhelm the sanitary sewer system and cause untreated water to overflow into the _____, where it doesn't belong.
4. Because the Northeast is one of the oldest regions in the country, the old sewer system pipes could have many _____ in it, which could also let unwanted water to seep in.
5. By showing you how to keep unwanted water out of our sewer system, _____ teaches you and your family how to keep our sewer system healthy and protect the health of the Mohawk River.
6. The Mohawk River is:
 Less than 50 miles long Less than 100 miles long Less than 200 miles long
7. The Mohawk River is the largest contributor to the Hudson River.
 True False

Activity Break 2

WATER WATCH

How can you **REROUTE, RECLAIM, and RECHARGE** excess water in this picture?



We're proud to have you as a Mohawk River Champion! Get your parents' help to share your completed picture, and steps you've taken around the house to REROUTE, RECLAIM or RECHARGE excess stormwater at rippleeffectocsd.org



Anthony J. Picente Jr., County Executive
Steven P. Devan, P.E., Commissioner,
Department of Water Quality Control and Water Pollution

An Initiative of the Oneida
County Sewer District



OPERATION
Ripple Effect™